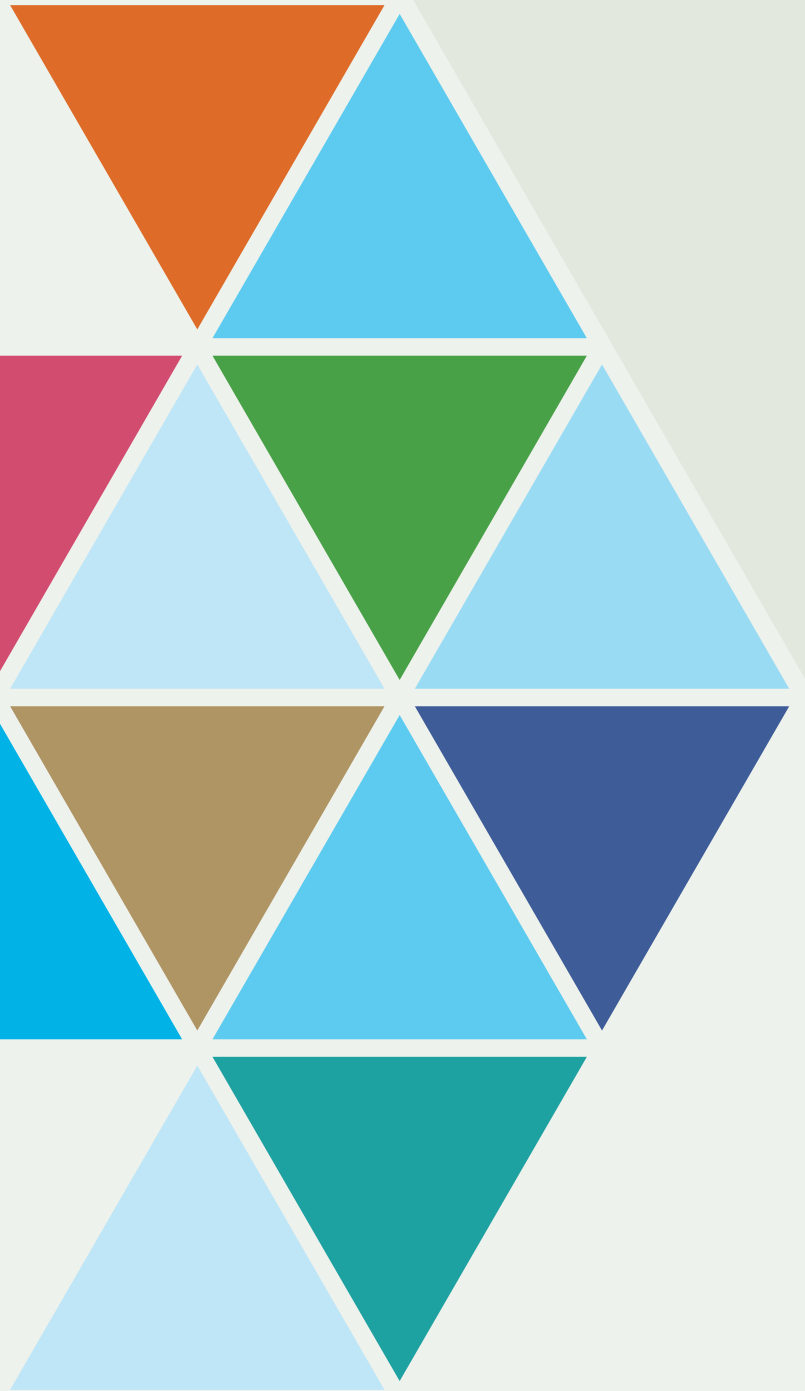


RASA
CORPORATION
CORPORATE PROFILE



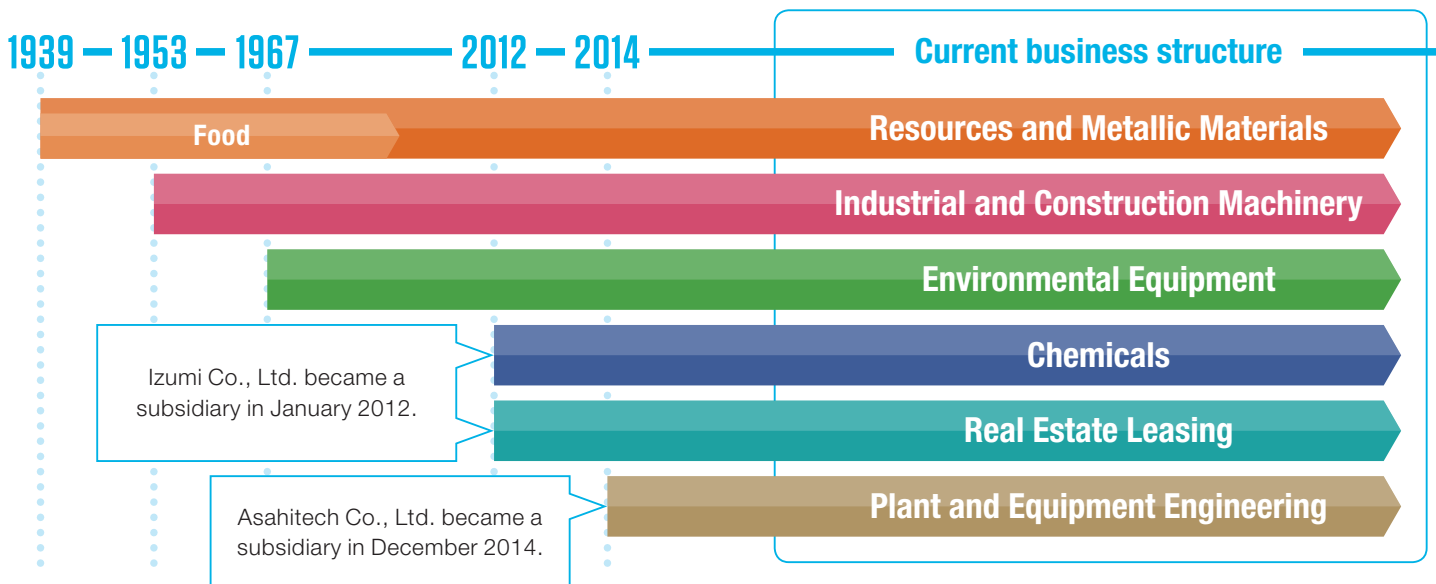
Rasa Group Outline

Independent Specialized Engineering Trading Company

Established in 1939 through the spinoff of a sales unit of Rasa Industries, Ltd., which is a company listed on the first section of Tokyo Stock Exchange, Rasa Corporation has evolved as an independent specialized engineering trading company. We deliver resources and products, sourced from manufacturers and vendors around the world, that best fulfill customers' needs. With "achieve leading shares and presence in niche markets" as our fundamental business posture, we possess specialized knowledge, networks, and technological expertise that underpin our leadership in specific markets. This specialization is the source of the Rasa Group's competitive advantage and customers' confidence in the Rasa Group.

Possessing superlative specialized technologies backed by deep knowledge, we offer a stream of new proposals to support industries worldwide.

History of the Rasa Group's Business Growth

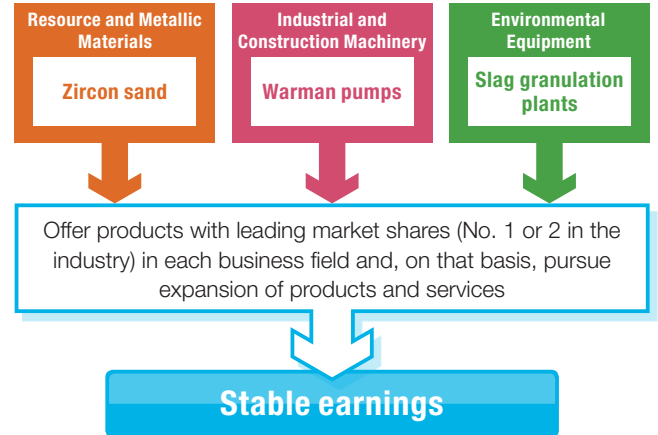




Leading Shares in Niche Markets

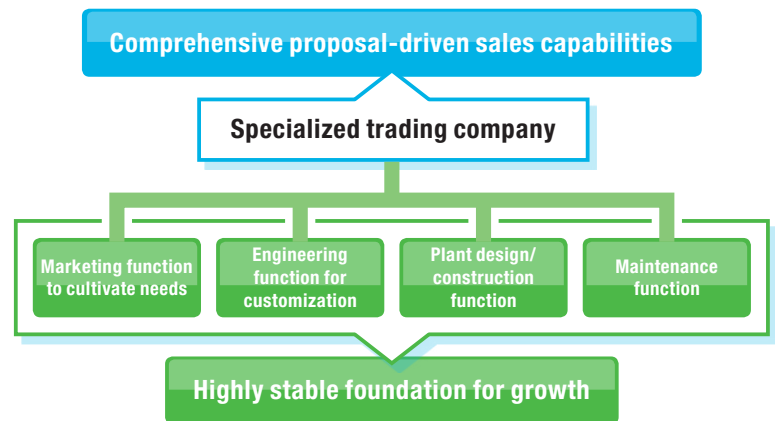
In the resources and metallic materials business, our market share for zircon sand is over 50% in Japan. In the industrial and construction machinery business, we handle Warman pumps for which we have the leading market share in Japan. In the environmental equipment business, Rasa is the sole company in Japan capable of handling every phase from design and construction of slag granulation plants through to the provision of operational support for them.

Leading shares in a series of niche markets have made us indispensable in a number of fields where we have cemented our position as the price leader, a position that enables us to enhance earnings power.



Functions and Expertise Transcending the Traditional Role of a Trading Company

We offer solutions to our customers through proposal-driven sales capitalizing on our four functions that transcend the role of a traditional trading company. The range of functions we offer enables us to cultivate long-term business relationships with customers, and by addressing customers' present and latent needs, we have established a stable foundation for growth.



Industrial and Construction Machinery

P.3

We lead the slurry pump market in Japan with Warman pumps, for which we have the top market share, and Hidrostal pumps.

Resources and Metallic Materials

P.5

We import zircon sand, our mainstay product, from the Australian mineral sand producer whose output is the largest in the world, as its sole and exclusive distributor in Japan. Our market share for zircon sand is over 50% in Japan.

Environmental Equipment

P.6

In response to growing demand for construction and refurbishment of steel mills around the world in recent years, we export our proprietary slag granulation technology and equipment.

Plant and Equipment Engineering

P.7

We perform design, construction, and maintenance for plants and related facilities in diverse fields.

Chemicals

P.9

We supply various synthetic resins and chemical products to wide-ranging industries, including the automotive, construction materials, electrical and electronics industries.

Real Estate Leasing

P.9

The leasing business emphasizes effective utilization of properties owned by the Rasa Group, which are primarily high-value-added properties in desirable locations in Tokyo.

Industrial and Construction Machinery

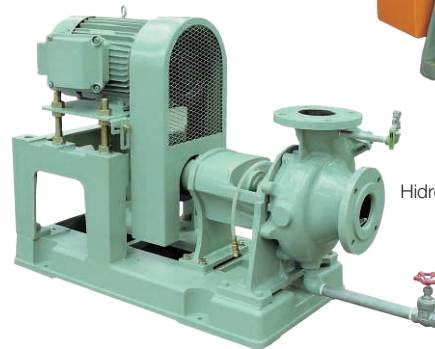
Trailblazing Leader in the Japanese Market for

Pumps

We handle high-quality pumps from Japan and around the world. With an extensive line-up of products covering diverse applications ranging from pumps suitable for water for water supply to those able to cope with solid objects, we meet our customers' needs.



Warman pump



Hidrostal pump

Comprehensive engineering solutions



Meticulous technical support systems for machinery operation throughout Japan

In addition to maintenance services provided by a network of branches and sales offices in major cities throughout Japan, Machinery Centers,

which are our bases for machinery maintenance services and parts distribution, offer constant, comprehensive support for machinery operation.

Our principal channel is direct sales to end users and we emphasize proposal-driven sales corresponding to needs identified at each site. To ensure that we are able to offer the optimum proposals based an accurate understanding of customer needs, we continually strive to enhance our sales engineers' technical knowledge.



Special Slurry Pumps

Multi-purpose mobile pump unit "BETSY"

Equipped with a non-clog pump suitable for diverse fluids ranging from water for water supply to sludge and solid objects, this portable diesel-engine-driven pump can be used in virtually any circumstances, including emergency situations.



Construction and civil engineering machinery

We sell and lease shield pipe jacking machines. Our unique product portfolio includes automatic pipe cutting machines, breakers, and sewage pipe rehabilitation robots.

In the industrial and construction machinery business, we handle various pumps, hand held breakers, and shield pipe jacking machines. For slurry pumps, in particular, we continue to be the trailblazing leader in the Japanese market by virtue of our proactive development of applications.

Warman pumps, our principal products, are corrosion- and erosion-resistant pumps suitable for diverse applications in many fields. Our specially designed Hidrostal pumps are mainly used at sewage treatment facilities and night soil treatment plants. Many of them are also delivered to customers in the food and chemical industries.



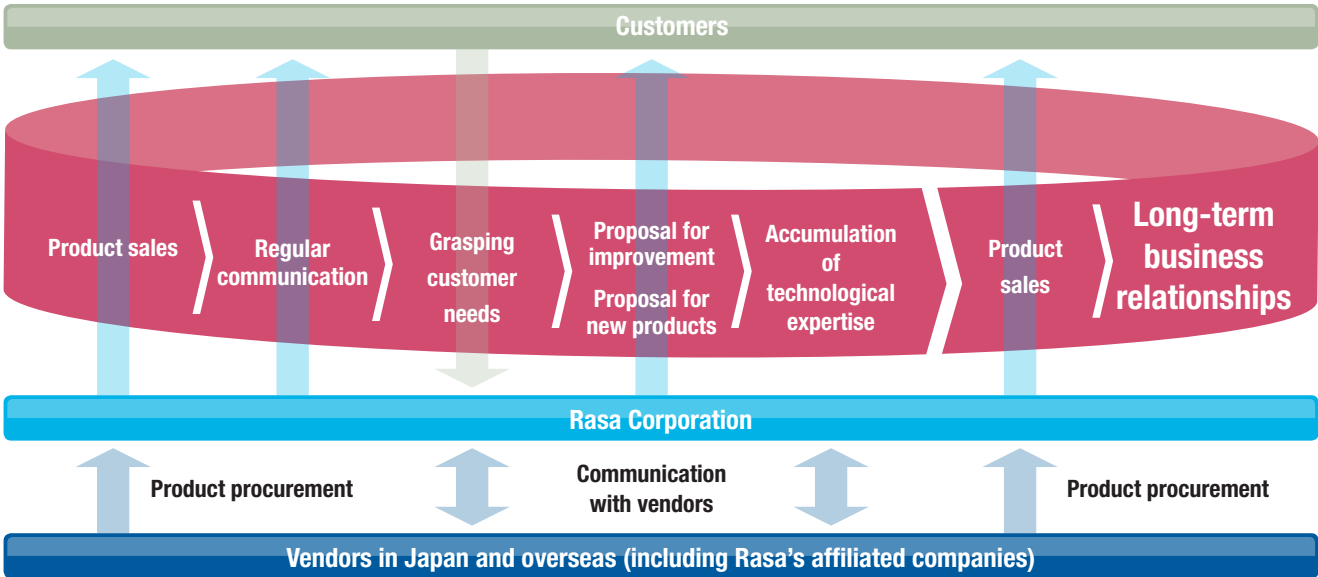
Shield pipe jacking machine

Strong relationship with customers

A systematic approach encompassing proactive application development, customer-oriented products, and meticulous maintenance services; partnership with customers that contributes to expansion of their businesses through comprehensive technological solutions —these are Rasa’s vital strengths.

Customer-oriented products leveraging our flexibility as an independent trading company

As an independent trading company unconstrained by ties to particular manufacturers, Rasa can handle products sourced from manufacturers in Japan and throughout the world corresponding to customer needs. Based on meticulous consideration from a customer-centric perspective, we determine what the customer really needs and then make a proposal incorporating the optimum products. Ease of maintenance and high durability are also key factors in product selection. Through this approach, we are able to build stronger, closer customer relationships rooted in trust.



Resources and Metallic Materials

Supply resources to support industrial development

Creating new value as the No. 1 supplier in niche markets

Contributing to society through imports of useful resources is our important mission.

Having established a system for supplying diverse products, we are developing products that offer new value while pursuing new business development capitalizing on our unique network.

No. 1 supplier of zircon sand in Japan

Zircon sand, our mainstay product, is a mineral resource with an extensive application field, including ceramic opacifiers, refractory bricks for blast furnaces, abrasives for mirror finishing of semiconductors and silicon wafers, and materials for touch panels. As the sole and exclusive distributor in Japan, Rasa imports zircon sand from the Australian mineral sand manufacturer whose output is the largest in the world and sells it in the Japanese market.

What is zircon sand? Mines in Australia and South Africa are the principal sources of zircon sand, a natural ore. In view of its properties—high melting point, heavy specific gravity, and hardness, zircon sand is widely used in industry as a material for touch panels and as an abrasive for mirror finishing of IC chips.

Mineral sand



Zircon, rutile, leucoxene, ilmenite, etc.

Refractory raw materials



Zirconia, alumina, silicon carbide, graphite, magnesia, etc.

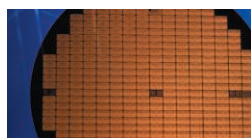
Industrial materials



Non-ferrous metallic raw materials (metallic silicon, aluminum mother alloy, magnesium ingots, electrolytic metal manganese, etc.), various ferro alloys, various zirconium chemical products, diatomite, heat resistant industrial felt, ceramic fiber products, graphite products, coconut shells, etc.

Cultivating emerging markets in Asia as Japanese manufacturers globalize

In recent years, Japanese manufacturers have been accelerating the shift of production operations to emerging-market countries in Asia. Responding to this trend, Rasa is vigorously cultivating emerging markets in Asia, capitalizing on the global network established through imports of raw materials.



Mirror finishing of a semiconductor chip

New products, such as metallic silicon, leveraging a high-mix small-lot approach

High-mix small-lot sales are one of Rasa's strengths. In particular, for metallic silicon, we apply this approach from the procurement phase to meet demand for secondary aluminum alloys, silicone resin, etc. for solar cell, semiconductor and automotive applications.





Environmental Equipment

Engineering the Future

Deploying advanced technologies to protect the Earth

In view of the urgent need to mitigate global warming and in response to rising energy costs, environmental protection and energy saving have risen to the top of the agenda across industry.

Our advanced recycling technology addresses the requirements of industry while helping protect the Earth for future generations.

Partnerships with European high-pressure pump manufacturers

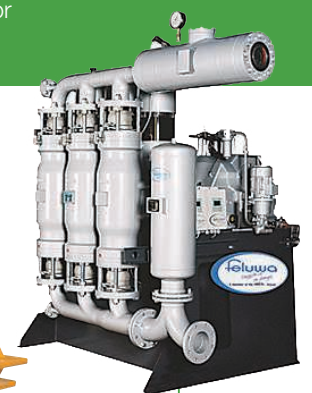
Through partnerships with European manufacturers of high-pressure pumps, we offer two types of high-pressure pumps with excellent performance to customers throughout Japan.

We have delivered many Putzmeister high-pressure piston pumps mainly to sewage treatment facilities and power stations. These high-pressure, large capacity piston pumps are also used for effective utilization of biomass, a source of renewable energy. Deliveries of compact, low-flow-rate-type piston pumps have been increasing as well.

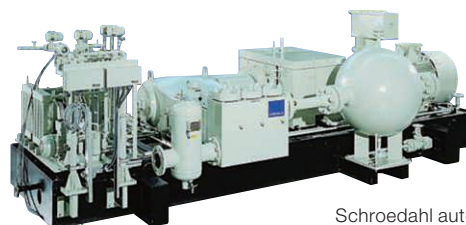
Feluwa pumps, which are notable for high-pressure and large flow capacity, are widely used for various applications mainly in the chemical industry. In particular, Feluwa pumps are highly evaluated by the customers for spray drier application. It is indispensable equipment to manufacture fine and uniform power particles because of its stable slurry feeding capability without pulsation.



Putzmeister pump



Feluwa pump



URACA high-pressure plunger pump



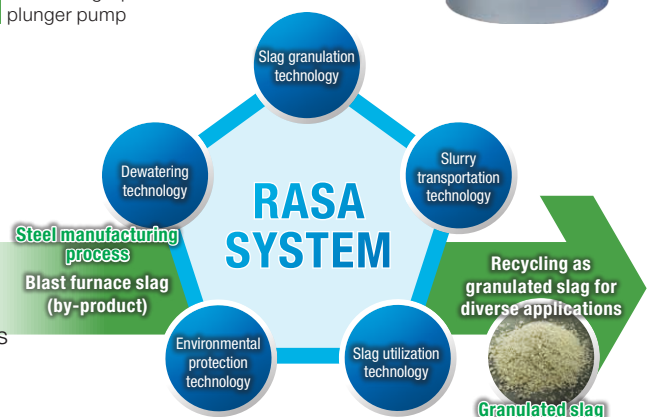
Schroedahl automatic recirculation valve

Pioneer of slag granulation plants

—Rasa System for reuse of slag—

The Rasa System slag granulation plant, which developed in 1967, employs Rasa's proprietary technology. Using jets of high-pressure water, it rapidly cools molten slag, a by-product of steel manufacturing in a blast furnace, to produce granulated slag.

Granulated slag is recycled as raw material for cement and concrete, soil improvement additives, paving material, etc. In view of the increasing focus on recycling and resource saving, the Rasa System has gained recognition as a technology capable of contributing to industry's environmental protection efforts.



Plant and Equipment Engineering

Serving major plants at



Rasa acquired Asahitech Co., Ltd. in 2014 that handles design, construction, and maintenance of diverse plants, such as oil refineries and petrochemical plants, and related facilities.

The plant and equipment engineering business is a good fit with the Rasa Group's industrial and construction

machinery business and environmental equipment business, enabling the Rasa Group to enhance its engineering capabilities for providing high-value added services to customers.

Unceasing Pursuit of Plant Functionality and Safety

New factory for special pipes starts operation

A new factory for machining special pipes made of stainless steel, aluminum, etc. started operation in April 2017. We are meeting demand from an increasing number of industries, including petrochemicals, food, and pharmaceuticals.

This new factory is also a base for maintenance of large rotating machines and is responding to demand from companies in the Keiyo waterfront industrial complex as well as from manufacturers of pumps and compressors.



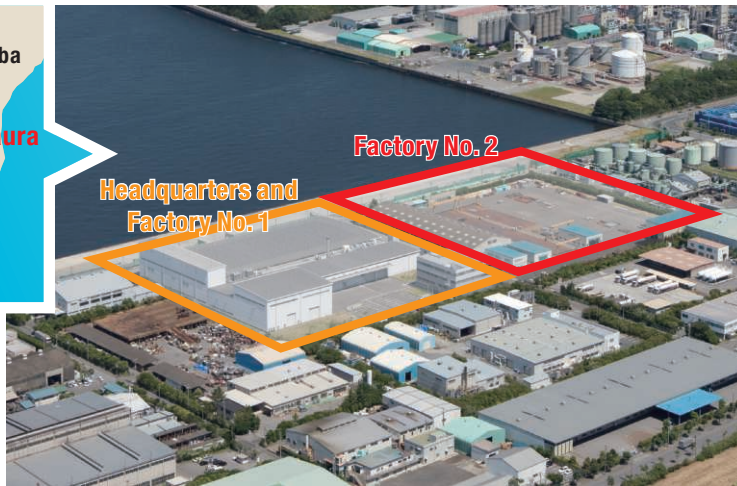


Keiyo waterfront industrial complex



Keiyo waterfront industrial complex

Industrial zone stretching along the coast of Chiba Prefecture facing Tokyo Bay (Chiba City to Futsu City)



Headquarters, Sodegaura Factory No. 1 and Factory No. 2
(each factory has a 20,000 m²)

Sodegaura Factory No. 1 and Factory No. 2

Principal tasks are design and construction of plant piping and pump maintenance.

By utilizing our spacious workshop of factory site with 40,000m², we can manufacture and prefabricate the piping layout in our factory and minimize the construction works at site. This system contributes not only to our manufacturing efficiency in the factory, but also to the quality and the competitiveness of our products as well as the working hours at site.

Plant expertise and technological capabilities transcending the traditional role of a trading company

We are engaged in design and construction of various plants and piping for air conditioning systems, as well as maintenance. Leveraging our technological capabilities, track record, and the trust we have earned, we are endeavoring to achieve further synergy in the Rasa Group so as to contribute to development of the oil refining, chemical, food, medicine, semiconductor and other industries that represent Japan.

Track record and trust anchored in proven technological capabilities

Characteristics and strengths of the plant and equipment engineering business

One-stop solution provider from design to construction work

Outstanding expertise and technological capabilities in plant piping work

Many personnel qualified in related fields

ISO 9001 certified (quality management systems)

COHSMS certified (Construction Occupational Health and Safety Management System)

Customer base consisting primarily of major customers (stable order book)

Transactions with some 60 companies in the Keiyo waterfront industrial complex

Prime contractor in about 50% of the projects

Factories certified by major pump manufacturers

Swift response to customers, with headquarters functions and support teams at a spacious 40,000 m² site in a major industrial zone of Japan

Highly regarded as a one-stop solution provider from design and construction to maintenance

Chemicals

Exploring Diverse Possibilities as a Specialized Trading Company

Principal products handled

- ▶ **Plastics** (synthetic resins, resin additives)
- ▶ **Sheets, films, tapes** (various resin films, metal foils, etc.)
- ▶ **Various processed products** (extruded products, injection-molded products, etc.)
- ▶ **Oil and fat, chemicals** (chemicals, other chemical products)

<Customers>

Automotive, construction materials, electrical, electronics industries, etc.

Synthetic resins and chemical products for the automotive and other industries

In 2012 Rasa acquired of Izumi Co., Ltd., a trading company long specialized in synthetic resins and chemical products, which signaled our entry to the chemicals business.

We are striving to enhance our functions as a specialized trading company supplying various kinds of synthetic resins and chemical products primarily to the automotive, construction materials, electrical and electronics industries.

Extending our reach from a base in Southeast Asia

We handle synthetic resin compounds, various plastic films, resin additives, oil and fat, chemical products, etc. and address the needs of diverse industries. From the Representative Office in Bangkok, Thailand, we are extending our reach to better serve customers across the countries of Southeast Asia.

Real Estate Leasing

Effective Utilization of Properties

Leasing of high-value-added properties with favorable conditions in central Tokyo to credible tenants

Rasa secures rental revenues through effective utilization and fine-tuned planning and management of the Group's properties. Rasa Real Estate Co., Ltd. was established in 2015 to further strengthen the real estate operations. Most of the Group's properties are high-value-added properties with favorable conditions, located in central Tokyo. By leasing space to sound, superior tenants, we also contribute to vitalization of the locations.



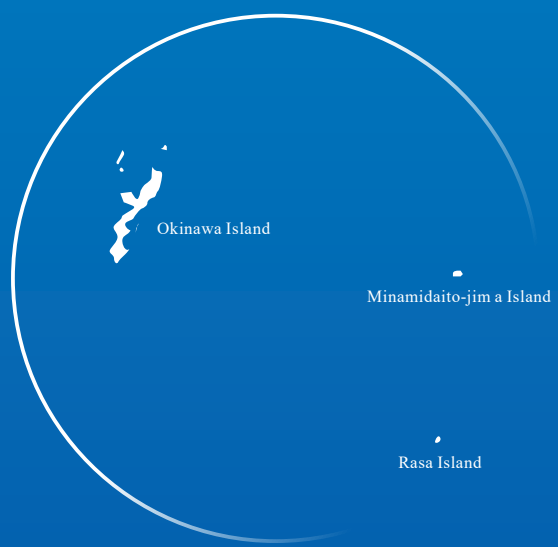
RASA CORPORATION

Origin of the Company Name

Our company name, Rasa, comes from “Rasa Island” in Okinawa Prefecture. Although the island’s official name is Okidaito-jima, it is commonly referred to as Rasa Island. The first company to mine phosphate ore on this island was Rasa Island Phosphate Ore Company, the forerunner of Rasa Industries, Co., Ltd. Rasa Corporation was founded in 1939 as a spin-off of sales unit of Rasa Industries. Although Rasa Corporation was previously a subsidiary of Rasa Industries, it has long been an independent trading company handling a wide range of products and continues to grow.

Where is Rasa Island?

Location: Aza Rasa, Kitadaito-mura, Shimajiri-gun, Okinawa Prefecture
Located 24° north and 131° east, Rasa Island, a tiny island with a 5 km coastline, is encircled by coral reefs. The entire island is owned by Rasa Industries. The island had a population of about 2,000 at the peak of phosphate ore mining but is now uninhabited.





RASA Nihonbashi Bldg.,
11-5, Nihonbashi-Kakigara-cho 1-chome,
Chuo-ku, Tokyo 103-0014, Japan
Tel. +81-3-3668-8231/Fax.+81-3-3669-1729



Easy-to-read fonts are used
based on the universal design
(UD) concept.